

**RICOH**  
imagine. change.

# Ricoh Flatbed Pro™ T7210

Wide range of applications requiring  
high adhesion, productivity and image quality



Prints on  
wood, glass,  
metal and  
more up to  
110mm thick



# Our new UV Flatbed Printer covers 100m in stunning graphics faster than anything else

The new Ricoh Pro T7210 UV flatbed is the ideal platform when printing onto a wide range of substrates requiring flexible ink with excellent adhesive properties. Productivity is further enhanced with the integrated vacuum table with pin registration that allows easy positioning of materials that are held firmly in place whilst printing. Full bleed printing eliminates the need for unnecessary trimming further reducing the time to dispatch the finished job.



# High performance. Highly versatile.

MODE	VARIATIONS
4C	CMYK
5C	4C + W 4C + CL
6C	W+4C+CL

\*Primer ink available in each mode.

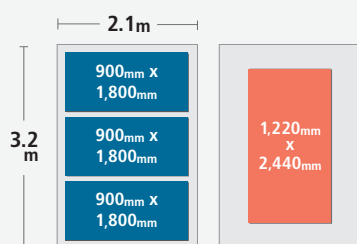
## High Performance

The Ricoh Pro T7210 has an impressive print speed of up to 100m<sup>2</sup>/h in 4C High Productivity mode and 50m<sup>2</sup>/h in 4C standard mode. The system uses Ricoh's own highly acclaimed Piezo Multi-drop Ricoh MH54 series print heads configured in three rows producing a resolution of 635 x 1,800 dpi enabling grey scale printing and exceptional print quality.

\*Standard in-line inks are Cyan, Magenta, Yellow, Black, White, Clear and Primer.

## Supporting your demanding environments

- Up to 100m<sup>2</sup> Up to /h :High Productivity in Draft mode 4C configuration
- To support the most demanding production environments
- The latest addition to the Ricoh range of large format printers



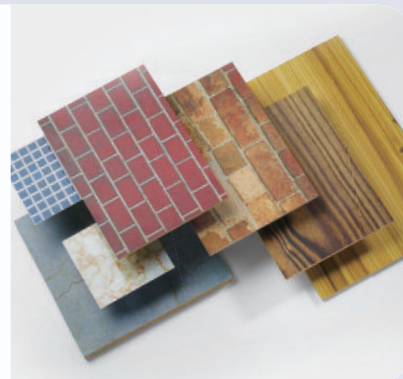
## Capability for various sizes up to 110mm media thickness

The max printing area of 2.1m x 3.2m will accommodate three sheets of 900mm x 1,800mm or a single sheet up to 1,220mm x 2,440mm 110mm thickness.

## Wood, glass, metal and so on. Print to versatile applications

Ricoh's specially formulated UV ink is designed to meet the wide range of customer requirements in decoration. The ink is flexible with excellent adhesion\* suitable for post processing, shaping and bending into its final design.

\*Adhesion is evaluated by cross cut test. (JIS K5600-5-6)



# Highly versatile, reliable and easy to use



## Multi zone vacuum system

The flatbed is divided into 8 areas. Each area has a variable vacuum switch to control suction, eliminating the need for masking, which is conveniently located close to the operator.

## Ioniser function

The ioniser function helps to create more accurate positioning of the jetting by reducing static electricity on the surface leading to better print quality.



## Front access maximises operator productivity

The Ricoh Pro T7210 provides easy access for managing the ink tanks, which are located at the front of the system.

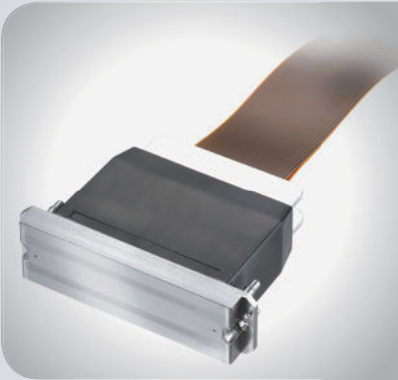
## High-quality image processing technology

Ricoh technology offers jetting accuracy, high print quality, high resolution and high reliability.





# Ricoh technology offering high durability



## Highly reliable Ricoh print head

Ricoh inkjet print heads are made of stainless steel, offering excellent durability and extended service life. The multidrop capability allows the creation of a range of drop sizes.

## Easy maintenance

Daily operator routines to keep the print heads clean are eliminated by the automatic wiper system on the Ricoh Pro T7210, enabling grey-scale printing.

## Newly developed UV ink and LED lamps

Ricoh UV ink has high adhesion properties for performance on a wide range of rigid industrial materials. LED is both energy saving and has a longer life resulting in less downtime to change parts.



## A cost effective solution

Ricoh's intelligent resource management and streamlined interface technology make short runs and one-off runs simple and cost effective. This helps boost return-on-investment for custom jobs. Whilst the LED lamps not only save energy, but are designed for long life and less downtime.

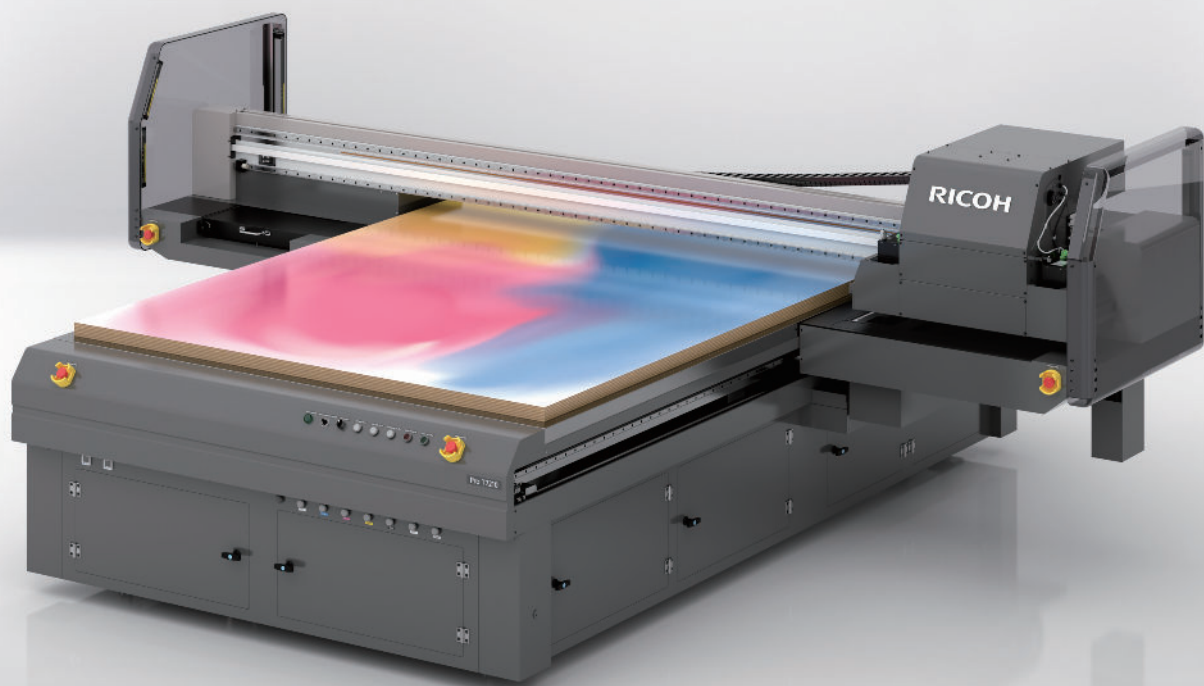


## Ricoh white ink expands the ability of designers

- Ricoh's white ink gives more eye-catching results and expands your applications range
- Printing white ink as a foundation layer on transparent or colour materials helps retain the natural vividness of colours
- Three layered printing, which prints white ink between colours, shows images on both



# Ricoh Pro™ T7210. Everything you need to succeed.



## Endless printing possibilities

- 1 Capacity for up to 110mm media thickness
- 2 Up to 100m<sup>2</sup>/h in high productivity 4C configuration
- 3 Integrated vacuum table with pin registration
- 4 Specially designed end guards have sensors for operational safety
- 5 Highly reliable Ricoh print heads
- 6 Energy saving LED lamps
- 7 Newly developed UV ink
- 8 Front access to maximise operator productivity

## Our expertise and support in action

Like to see the difference our new Ricoh-developed flatbed printer and world leading inkjet technology could make to your business? Then come to the Ricoh Customer Experience Centre either in the UK or Japan.

It's where our Inkjet Technology Centre is based and where our scientists explore how technology can be optimised for a range of industrial applications including fluid compatibility and jetting characteristics, component application compatibility. They also offer expert technical support and guidance.

Here you can get your hands on advice and see live demonstrations of our innovative inkjet head and Piezo technology, the benefits of our UV curing versus the traditional Merco lamp, and much more.

If offers you the remarkable depth of support and care that you would expect from Ricoh - the company that has been at the forefront of inkjet technology innovation for some thirty years.



## Information on Ricoh's Inkjet heads

### Ricoh's inkjet capabilities

Ricoh is a major force in inkjet technology, having developed our own Piezo print heads, and has dedicated R&D laboratories in the EU and Japan to develop and improve these printing technologies.

Ricoh's inkjet capabilities are so well regarded that they have been used with partners in areas as diverse as Additive Manufacturing and textiles.

Ricoh also owns our AR latex and gel inks formula, which means that we can seamlessly integrate technology and consumables to optimise performance.



# Ricoh Pro™ T7210

SYSTEM SPECIFICATIONS

## GENERAL

Model name:	Ricoh Pro T7210	
Type:	True flatbed	
Print method:	UV Inkjet	
Head type:	Ricoh MH54SERIES	
The number of inkjet heads:	12	
Resolution:	MAX : 635 x 1,800dpi	
Ink type:	Ricoh UV ink	
Ink:	CMYKW, Clear and Primer	
Curing method:	LED	
Ink bottle capacity:	CMYK and Clear	1 L for each
	White	850 ml
	Primer	1 L
Ink capacity of Machine:	2.5 L per colour	
Print mode	4C, 5C, 6C + Primer	
Print Speed	Draft	100.2 m <sup>2</sup> /h
4C mode(CMYK)	Production	66.8 m <sup>2</sup> /h
	Standard	50.1 m <sup>2</sup> /h
	High Quality	16.6 m <sup>2</sup> /h
Print Speed	Draft	65.3 m <sup>2</sup> /h
5C mode(4C+W)	Production	21.6 m <sup>2</sup> /h
	Standard	16.4 m <sup>2</sup> /h
	High Quality	5.4 m <sup>2</sup> /h
Print Speed	Draft	32.6 m <sup>2</sup> /h
4C+Clear	Production	10.9 m <sup>2</sup> /h
4C+Primer	Standard	8.2 m <sup>2</sup> /h
	High Quality	4.1 m <sup>2</sup> /h
Media	Rigid materials: ACRYLIC, PETG, PC, PVC, GLASS, ALUMINIUM, STEEL, WOOD, MDF etc.	
Max printing size (W x D)	2,100mm x 3,200mm	
Media	Max size	2,110mm x 3,210mm
	Thickness	110mm
	Weight	45kg/m <sup>2</sup>
	Roll option	N/A
Interface	USB 3.0	
Colour Rips	SAi Photo Print	
Dimensions	Width	4,410mm
	Depth	3,860mm
	Height	1,600mm
Machine weight	Under 1,500kg	
Vacuum area	Up to 8 sections	
Power Supply	EMEA/Asia 25Amp 3-phase 380-415V NA/JPN 32Amp 3-phase 200-240V	

## PC SPECIFICATIONS

### Printer control software

Windows® Operating System	Windows® 10 / 7 (64bit)
CPU	Intel® Core™ i5 2GHz or more recommended
RAM	4GB or more recommended
Screen Resolution	1,152 x 854 minimum, with 16-bit colour or higher

### SAi Flexi Print DX (In bundle with Ricoh Pro T7210)

Windows® Operating System	Windows® 10 / 8 / 7
RAM	1GB Minimum, 4GB or more recommended
Screen Resolution	1,152 x 854 minimum, with 16-bit colour or higher
Install Space	1GB free for base program plus extra install space for ICC Profiles Working Disk Space 4GB

- Product appearance and specifications may be changed without prior notice for improvement purposes.
- The actual colour of the product may vary from the pictures.
- Windows are either registered trademarks or trademarks of Microsoft Corp. in the United States and/or other countries.
- Intel are trademarks of Intel Corporation in the United States and/or other countries.
- Company and product names are trademarks or registered trademarks of their respective companies.
- Please contact your sales representative for details on performance, specifications, and restricting conditions, etc.

**RICOH**  
imagine. change.

[www.ricoh-europe.com](http://www.ricoh-europe.com)

The facts and figures shown in this brochure relate to specific business cases. Individual circumstances may produce different results. All company, brand, product and service names are the property of and are registered trademarks of their respective owners. Copyright © 2017 Ricoh Europe PLC. All rights reserved. This brochure, its contents and/or layout may not be modified and/or adapted, copied in part or in whole and/or incorporated into other works without the prior written permission of Ricoh Europe PLC.