

Made to drive your business forward

Ricoh Hybrid Flatbed Pro™ TF6251

Brings image quality, productivity and versatility to the graphic arts market

RICOH
imagine. change.



**Pro™
TF6251**
116
m²/h
full colour
on rigid
boards

Prints on
**wood, glass,
metal** and
more up to
110mm thick

**Pro™
TF6251**
67
m²/h
full colour
on flexible
substrates

Print on PVC,
**PET, Banner,
Polyester,**
Woven up to
2.190mm width





Up to 116m²/h: Productivity has never been more affordable

The ideal printing solution for media versatility and application potential

Tap into the profitable sign and graphics market by producing products fast and efficiently on substrates up to 11cm thick with the RICOH Pro TF6251 UV flatbed printer.

Developed by Ricoh, the RICOH Pro TF6251 is the ideal solution to boost productivity* and diversify applications beyond traditional signage. Capitalise on emerging markets, including short run packaging, promotional products, and industrial and interior décor. Achieve industry-leading productivity and pursue ambitious growth plans fuelled by high profit potential, low operating costs, superb image quality and exceptional reliability.

**Productivity varies by print mode and media type.*

High performance. Highly versatile.

Printing speeds up to 116m²/h

MODE	VARIATIONS
Standard	C, M, Y, K, W, CI, Pr
Double White	C, M, Y, K, W, W

RICOH Pro TF6251 has industry leading print speeds of up to 116m²/h in 4C draft mode and 48m²/h in 4C standard mode. Driven by Ricoh's own highly accumulated industrial grade print head technology. The 12 MH54 series print heads in a three row staggered alignment, ensure high productivity and superior image quality that is ideal for the most demanding production requirements.

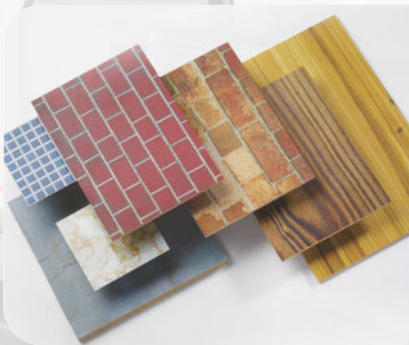
The primer can be used in all printing modes when flatbed printing in standard configuration.

Value-added printing

With two different ink sets to choose from you can select the ideal ink type for your application, media and usage needs.

- **RICOH Pro UV Ink GP120**
- **RICOH Pro UV Ink DG130**

Superior Colour Gamut ink (Graphics)
Versatile ink for high adhesion and wide Colour Gamut ink. Mandatory for Roll2Roll Option GP inks.



Practically unlimited application potential

Capable of printing on a wide variety of substrates, both rigid and flexible media up to 11cm. Ideal for traditional Sign and Graphics applications or expand into emerging markets such as décor, packaging and promotional items.

Media versatility for greater profitability

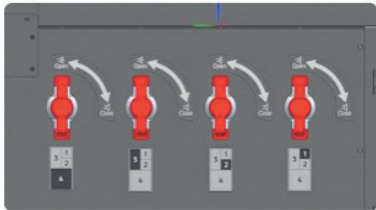
- Rigid media: 2,500mm x 1,300mm
- Roll media: Width 2,190mm
- Greenguard certified UV ink with low odour, ideal for indoor applications
- Supports media up to 11cm thick
- Ricoh's specially formulated UV LED ink is flexible, has excellent adhesion and is cured instantly, ready for immediate finishing and handling.

2,500mm x 1,300mm

Up to 11cm media thickness



So reliable and easy to use



Vacuum lever switches

Multi zone vacuum system

Four independent vacuum zones support printing onto irregular, oddly shaped or multiple media pieces, eliminating the need for pre-masking.

Ioniser function

Ioniser function helps eliminate static, ensuring optimal jetting accuracy. This results in consistent image quality and productivity.



Roll Option

Print on rigid or flexible media. With the RICOH Pro TF6251 you can expand your versatility and achieve consistent colour across rigid and flexible media with the roll media option. With the roll media option you can print on media up to 2,200mm wide weighing up to 55 kg, including thin heat sensitive substrates.

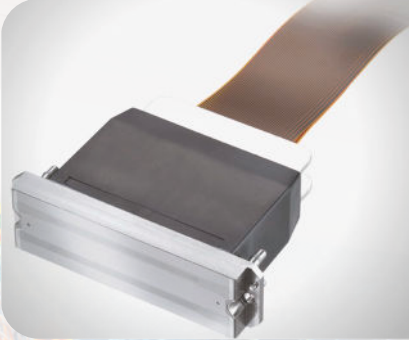
GP120 Ink is required when using the Roll Option. Clear and Primer inks cannot be used when printing with the Roll Option.

Media handling capabilities

- The registration pins allow you to accurately position media on the table, ensuring precise registration for double sided printing and accurate image placement
- The automated media height detection feature measures the media height and accurately positions the print heads and carriage for optimal printing performance.



Ricoh technology offering high durability



Highly reliable image quality

Ricoh inkjet print heads are made of stainless steel, designed to deliver day-one quality over years of reliable use. They feature 1,280 nozzles per print head with a native resolution of 600dpi. The multidrop capability allows for four levels of grey scale ensuring precision printing for crisp detail, sharp accurate text, smooth graduations and lifelike skin tones.

Easy and safe maintenance

- The automated cleaning station (or automated maintenance) simplifies daily operator routines to keep the print heads clean
- The crash detection sensor minimises media strikes and protects the print heads
- Ricoh's human sensor protects your operators from harm during the printer's operation.



A cost effective solution

Ricoh's intelligent resource management and streamlined interface technology make short runs and one-off runs simple and cost effective. This helps boost Return on Investment for custom jobs. Whilst the LED lamps not only save energy, but are designed for long life and less downtime.

Ricoh white ink expands the ability of designers

- Ricoh's white ink gives more eye-catching results and expands your applications range
- Printing white ink as a foundation layer on transparent or colour materials helps retain the natural vividness of colours
- Three layered printing, which prints white ink between colours and shows images on both sides.



Ricoh Pro TF6251. Everything you need to succeed.



Endless printing possibilities

- 1 Capacity for up to 11cm media thickness
- 2 Roll option expands versatility and consistency across rigid and flexible media
- 3 Up to 116m²/h high productivity in 4C draft mode
- 4 Integrated vacuum table with pin registration
- 5 Specially designed end guards have sensors for operational safety
- 6 Highly reliable Ricoh print heads
- 7 Energy saving LED lamps
- 8 Newly developed UV ink (Industrial, Sign & Graphics, versatile)
- 9 Front access to maximise operator productivity

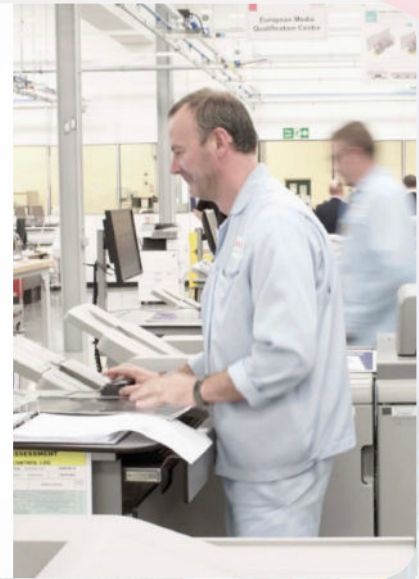
Our expertise and support in action

Like to see the difference our new Ricoh-developed flatbed printer and world leading inkjet technology could make to your business? Then come to the Ricoh Europe Customer Experience Centre "CEC" based in the UK.

It's where our Inkjet Technology Centre is based and where our scientists explore how technology can be optimised for a range of industrial applications including fluid compatibility, jetting characteristics, and component application compatibility. They also offer expert technical support and guidance.

Here you can get advice and see live demonstrations of our innovative inkjet head and Piezo technology, the benefits of our UV curing versus the traditional Merco lamp, and much more.

This Centre offers you the remarkable depth of support and care that you would expect from Ricoh – the company that has been at the forefront of inkjet technology innovation for some forty years.



Information on Ricoh's inkjet heads

Ricoh's inkjet capabilities

Ricoh is a major force in inkjet technology, having developed our own Piezo print heads, and has dedicated R&D laboratories in the EU and Japan to develop and improve these printing technologies.

Ricoh's inkjet capabilities are so well regarded that they have been used with partners in areas as diverse as Additive Manufacturing and textiles.

Ricoh also owns our AR latex and gel inks formula, which means that we can seamlessly integrate technology and consumables to optimise performance.



Ricoh Pro TF6251

SYSTEM SPECIFICATIONS

RICOH Pro TF6251

Model Name	RICOH Pro™ TF6251	
Type	True Flatbed	
Print Method	UV Inkjet	
Head Type	RICOH MHS4 SERIES	
The number of inkjet heads	12	
Resolution	MAX : 635 x 1,800 dpi	
Ink Type	UV	
Ink	CMYKW Clear and Primer	
Ink Variation	GP120 : CMYKW, DG130 : CMYKW Clear, T7210 : Primer	
Ink Configuration	Standard, Double White	
Curing Method	LED	
Ink Bottle Capacity	CMYK and Clear	1 L for each
	White	GP120 : 900 ml, DG130 : 850 ml
	Primer	1 L
Ink Tank Capacity of Machine	2.5 L	
Media	Rigid materials : ACRYLIC PETG, PC, PVC, GLASS, ALUMINIUM, STEEL, WOOD, MDF Roll materials : PVC, PET, Banner, Polyester, Woven	
Max Printing Size (WxD)	Rigid materials : 2,500 x 1,300 mm	
	Roll materials : Width 2,190 mm	
Media	Max Size	Rigid materials : 2,510 x 1,310 mm Roll materials : Width 2,200 mm, Length 300 m
	Thickness	Rigid materials : 110 mm Roll materials : 110 µm - 432 µm
	Weight	Rigid materials : 45 kg/m ² Roll materials : 55 kg
	Roll Option	Available
Interface	USB 3.0	
Colour Rips	ColorGATE	
Dimensions	Width	4,812 mm (Roll Option installed : 4,812 mm)
	Depth	2,200 mm (Roll Option installed : 2,817 mm)
	Height	1,580 mm (Roll Option installed : 1,580 mm)
Weight	Less than 1,650 kg (Roll Option installed : Less than 2,200 kg)	
Vacuum Area	Up to 4 sections	
Power Supply	EMEA/Asia : AC400V 3P/N/PE, 25A, 50/60Hz North America : AC208-240V 3P/N/PE, 30A, 60Hz	

Print Speed

Mode			RICOH Pro UV Ink Bottle GP120		RICOH Pro UV Ink Bottle DG130
			Flatbed	Roll Option	Flatbed
Standard	4C	Draft	116 m ² /h	67 m ² /h	116 m ² /h
		Production	64 m ² /h	43 m ² /h	64 m ² /h
		Standard	48 m ² /h	35 m ² /h	48 m ² /h
		Quality	32 m ² /h	25 m ² /h	32 m ² /h
	4C + W	High Quality	16 m ² /h	13 m ² /h	16 m ² /h
		Draft	-	-	-
		Production	30 m ² /h	24 m ² /h	30 m ² /h
		Standard	15 m ² /h	13 m ² /h	15 m ² /h
Double White	4C	Quality	10 m ² /h	8 m ² /h	10 m ² /h
		High Quality	6 m ² /h	5 m ² /h	6 m ² /h
		Draft	116 m ² /h	67 m ² /h	116 m ² /h
		Production	64 m ² /h	43 m ² /h	64 m ² /h
	4C + W	Standard	48 m ² /h	35 m ² /h	48 m ² /h
		Quality	32 m ² /h	25 m ² /h	32 m ² /h
		High Quality	16 m ² /h	13 m ² /h	16 m ² /h
		Draft	-	-	-
4C + W	Production	40 m ² /h	30 m ² /h	40 m ² /h	
	Standard	20 m ² /h	17 m ² /h	20 m ² /h	
	Quality	13 m ² /h	11 m ² /h	13 m ² /h	
	High Quality	10 m ² /h	8 m ² /h	10 m ² /h	

PC Specifications

Print Control Software

Windows® Operating System	Windows®7, Windows®10(64bit)	
CPU	Intel® Core™ i5 2GHz or more recommended	
RAM	4GB or more recommended	
Screen Resolution	1,366 x 768 minimum, with 16-bit colour or higher	
HDD	Install Space	1GB or more
	Working Space	100GB

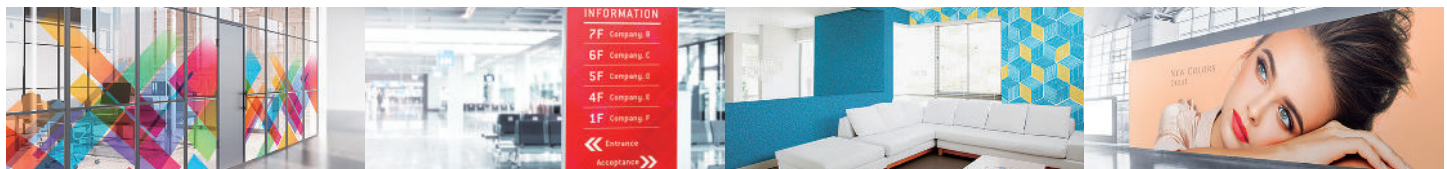
ColorGATE Select Version (bundled with RICOH Pro TF6251)

Windows® Operating System	32bit / 64bit OS supported -Windows®7, (Professional, Enterprise, Ultimate) -Windows®8, Windows®10 (Pro, Enterprise) -Mac OS X 10.5.2 or later with Parallels Desktop 4.0 or later for Mac
CPU	Intel® i7/AMD Quad-Core3GHz or more recommended
RAM	16GB or more recommended
HDD	Working Space 80GB or more recommended

- Product appearance and specifications may be changed without prior notice for improvement purposes.
- The actual colour of the product may vary from the pictures.
- Windows are either registered trademarks or trademarks of Microsoft Corp. in the United States and/or other countries.
- Intel® is the registered trademark of Intel Corporation in the United States and/or other countries.
- Company and product names are trademarks or registered trademarks of their respective companies.
- Please contact your sales representative for details on performance, specifications, and restricting conditions, etc.

COMMISSION REGULATION
(EU) 2019/2020.

The light source of this product is not intended for applications other than image printing



RICOH
imagine. change.

www.ricoh-europe.com

The facts and figures shown in this brochure relate to specific business cases. Individual circumstances may produce different results. All company, brand, product and service names are the property of and are registered trademarks of their respective owners. Copyright © 2019 Ricoh Europe PLC. All rights reserved. This brochure, its contents and/or layout may not be modified and/or adapted, copied in part or in whole and/ or incorporated into other works without the prior written permission of Ricoh Europe PLC.